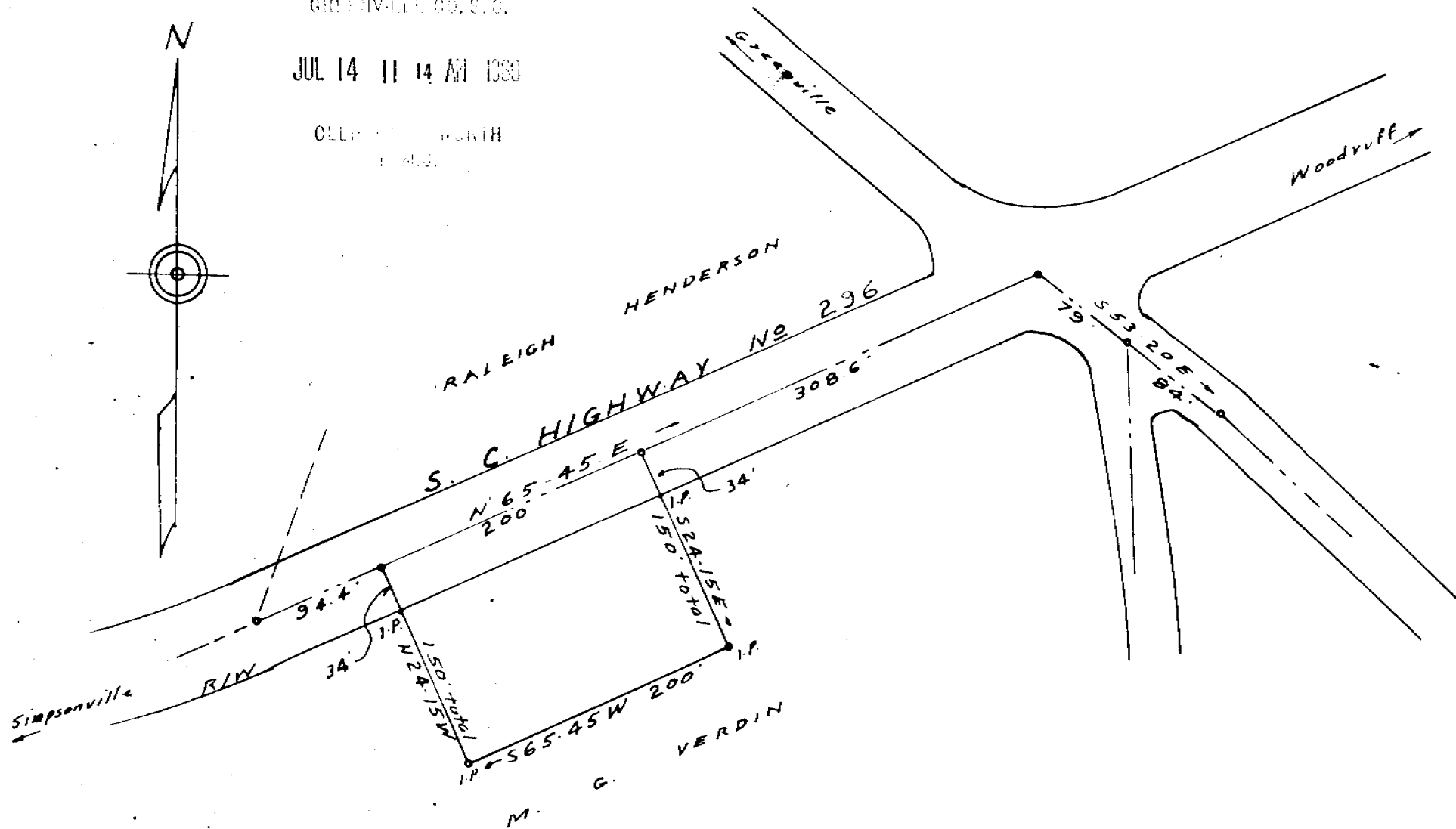
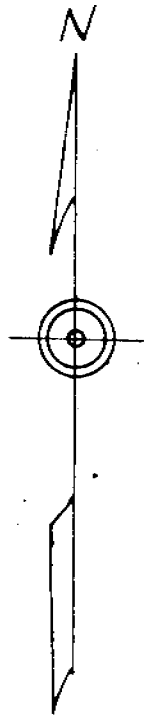


1022
GREENVILLE CO. S. C.

JUL 14 11 14 AM 1960

CLERK OF COURTS
GREENVILLE S. C.



PROPERTY OF
M. G. VERDIN
GREENVILLE COUNTY S. C.
SCALE 1" = 100' JULY 1955

C. O. Riddle - Reg. L.S.

Recorded July 14, 1960 at 11:14 A. M. #1725